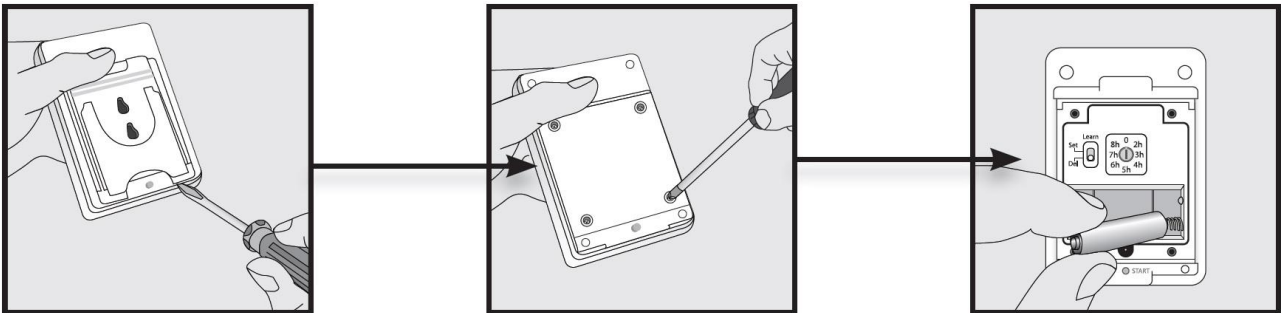


The twilight sensor is only suitable for Shuttle S, Shuttle L and Shuttle M receiver.

The sensor will detect the sunset and sunrise, according to the amount of light detected by the sensor. When the sun is down, the sensor will send a RF CLOSE command. All programmed Shuttle motors in range will close. In the morning when the sun rises, the sensor will send a RF OPEN command. All programmed motors in range will open.

It is important that the sensor is placed on the window-side of the curtain, preferably on the windowsill. Avoid light from streetlights and car headlights onto the sensor.

### Placing the batteries (2xAAA):



### Programming the sensor to Shuttle motor:

**PRESS BUTTON 3x  
WITH A PEN**



3x

**LED MOVES FROM  
1<sup>st</sup> → 2<sup>nd</sup> → 3<sup>rd</sup> LED**



**KEEP BUTTON  
PRESSED FOR 5 SEC.**

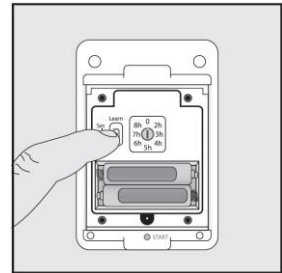


1x 5sec.

**GREEN LED  
STARTS BLINKING**



**PRESS LEARN  
SWITCH UPWARDS**



You can test the connection by pressing the grey start-button on the back of the sensor shortly. This will send the RF OPEN command. Deleting a sensor from a programmed Shuttle: same action as programming, only press LEARN button downwards.

### Setting the twilight level:

The twilight level can be adjusted. When the desired darkness is reached in the evening, the button on the back needs to be pressed for 3 seconds. Place the sensor in desired position. After the LED on the sensor has blinked for 15 seconds the level is set.